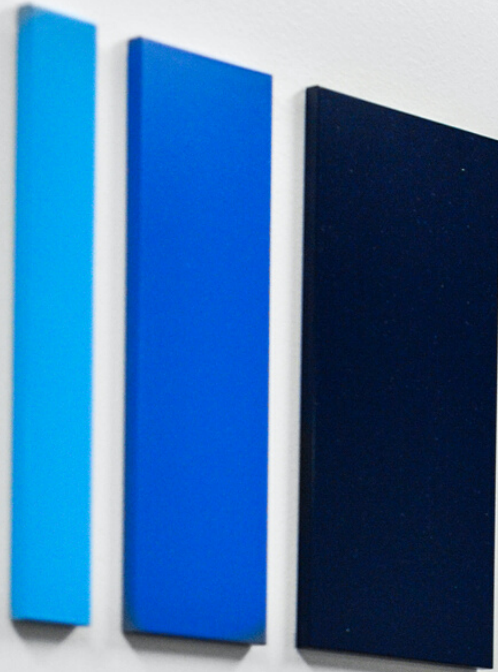


MODIVCARE EDISON CASE STUDY



modivcare

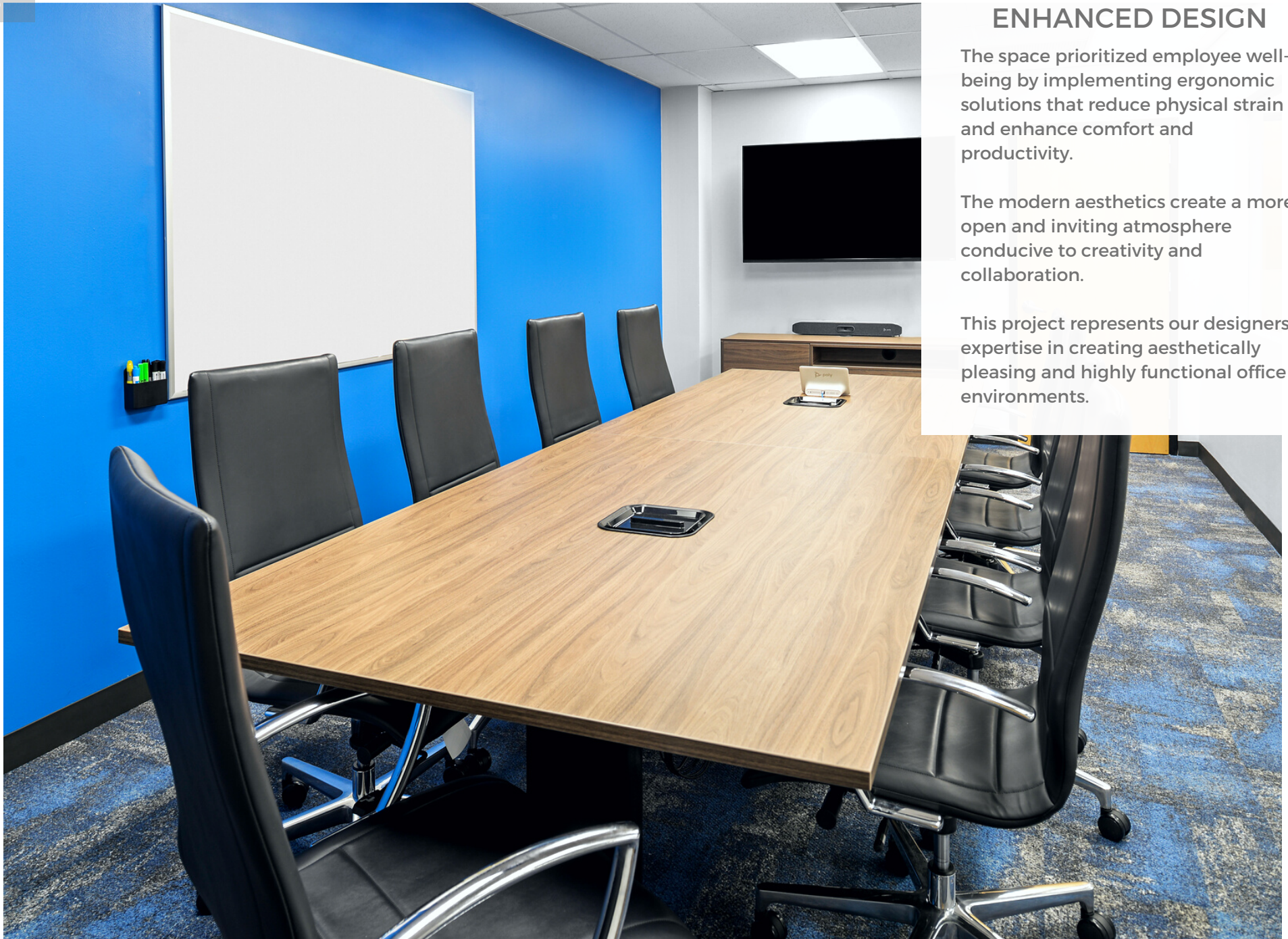


TRANSFORMATIVE SPACES

Our client ModivCare recognized the need to revitalize their Edison office space. They hoped to create a functional and inspiring office environment.

The goal was to modernize the workspace, enhance ergonomic aspects, create a brighter ambiance, and seamlessly integrate ModivCare's branding colors.

Our designers updated the existing office space by incorporating contemporary design and technology to improve workflow.



ENHANCED DESIGN

The space prioritized employee well-being by implementing ergonomic solutions that reduce physical strain and enhance comfort and productivity.

The modern aesthetics create a more open and inviting atmosphere conducive to creativity and collaboration.

This project represents our designers' expertise in creating aesthetically pleasing and highly functional office environments.



EMPLOYEE CENTRIC DESIGN

Focus Studio initiated the project with a comprehensive analysis of ModivCare's culture, workflow, and employee requirements, ensuring a tailored approach to the redesign.

Ergonomic furniture such as adjustable workstations and comfortable seating were chosen to enhance employee well-being and productivity.

Our designers chose designs that would improve comfort due to the ergonomic furniture and boost employee morale due to the well-thought-out workspace layouts.



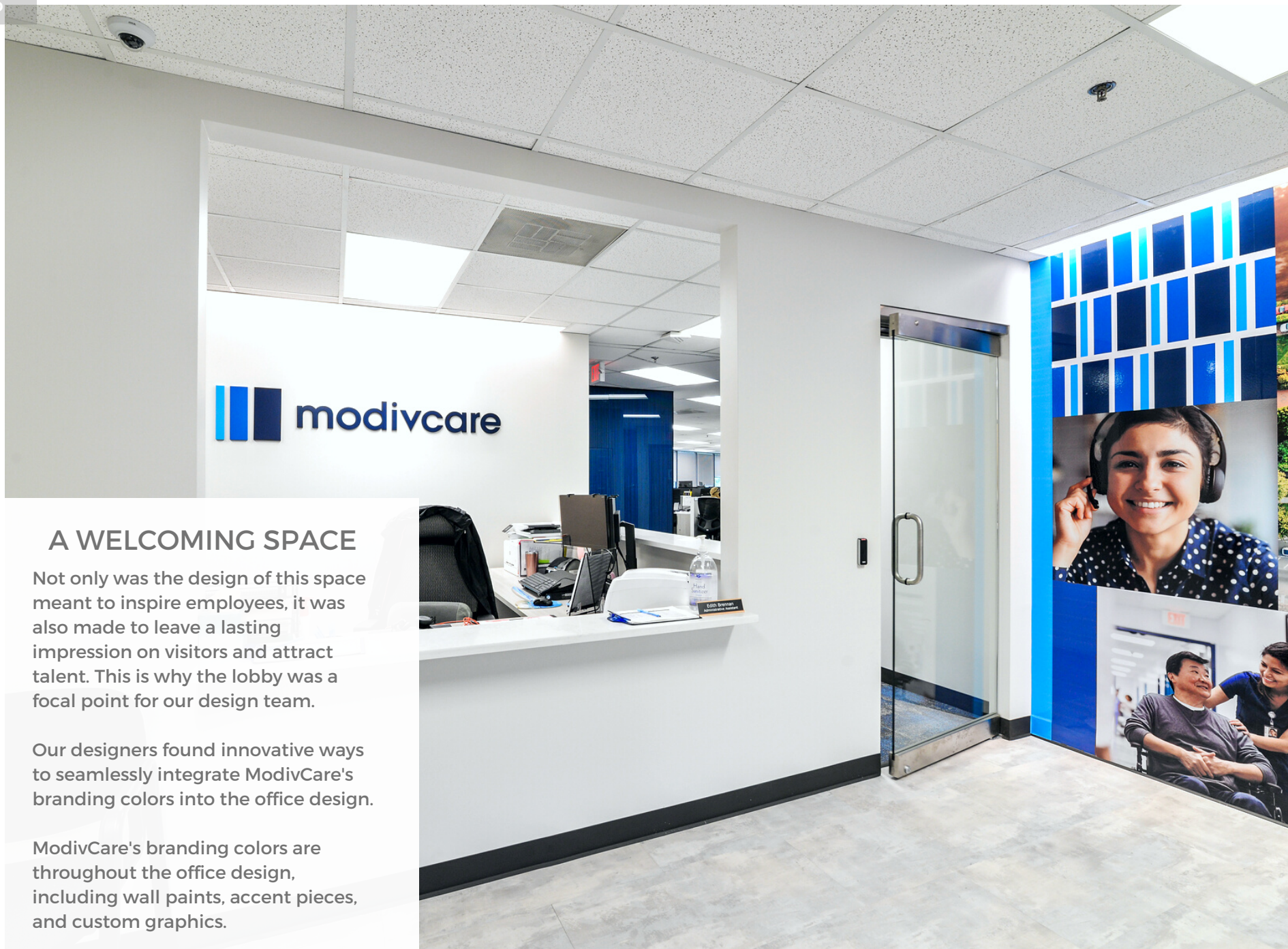
UPDATED & MODERN

The previously uninspiring cafe area was transformed into a vibrant and refreshing space.

It now features comfortable and modern seating, refreshing and bright color schemes, and new cabinets to go along with their updated appliances to create a welcoming and refreshing environment for employees to recharge and collaborate.

This cafe area is the perfect space for the company's culture to thrive.



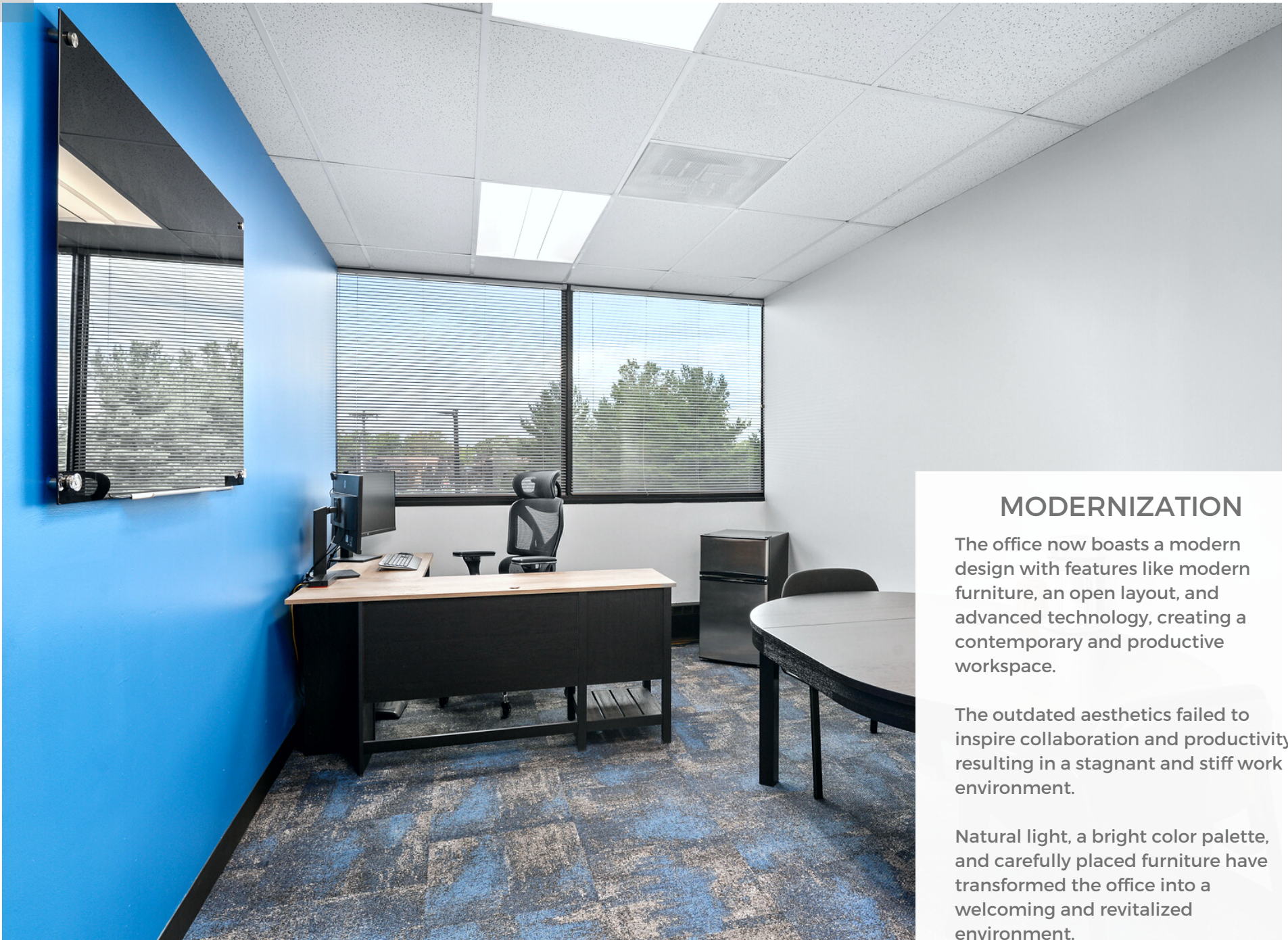


A WELCOMING SPACE

Not only was the design of this space meant to inspire employees, it was also made to leave a lasting impression on visitors and attract talent. This is why the lobby was a focal point for our design team.

Our designers found innovative ways to seamlessly integrate ModivCare's branding colors into the office design.

ModivCare's branding colors are throughout the office design, including wall paints, accent pieces, and custom graphics.

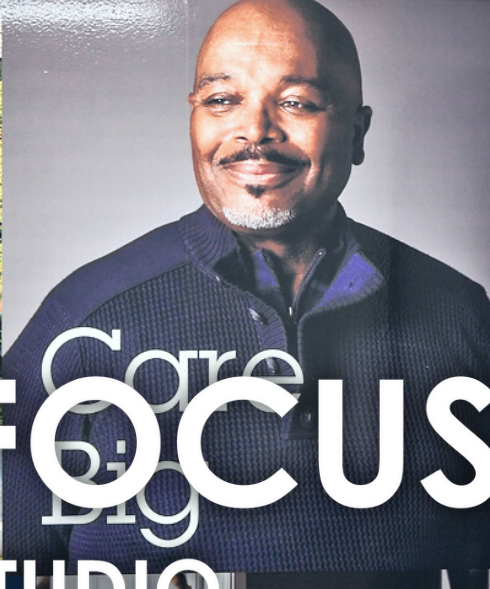
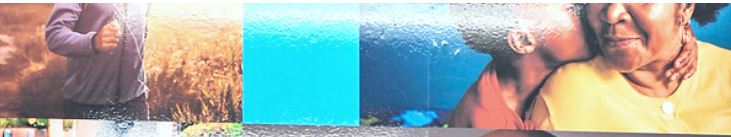
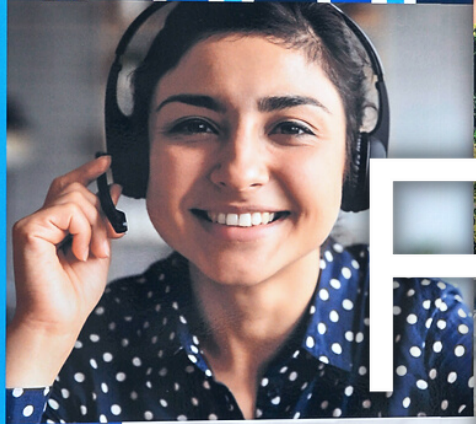


MODERNIZATION

The office now boasts a modern design with features like modern furniture, an open layout, and advanced technology, creating a contemporary and productive workspace.

The outdated aesthetics failed to inspire collaboration and productivity, resulting in a stagnant and stiff work environment.

Natural light, a bright color palette, and carefully placed furniture have transformed the office into a welcoming and revitalized environment.



Focus Big STUDIO

 modivcare

sales@focus.us | www.focus.us | 908-751-1800

